



# **10.1 inch ESP32P4 module**

## **JC8012WP4A1C\_I\_W**



## List

Product description .....	3
Features .....	3
Product parameters .....	4
Interface Description .....	5
Product Size .....	6



## Product description

This LCD module uses ESP32-P4 module as the main control, the main control is a dual-core MCU, integrated WI-FI and Bluetooth functions, the main frequency can reach 400MHz, 768 KB HP L2MEM, 32 KB LP SRAM, 128 KB HP ROM, 32M PSRAM, Flash size is 16MB, The display resolution is 800\*1280, without touch or Capacitive touch. The module includes LCD display screen, backlight control circuit, touch screen control circuit. Reserve the TF card interface, IO port interface, this module supports development in arduino IDE, ESP IDE, Micropython and Guition.

## Features

- 10.1-inch color screen, support 24 BIT RGB 16.7M color display, display rich colors
- 800x1280 resolution
- The sample program has been programmed in the factory and can be plugged in
- With TF card slot for easy expansion storage
- Provide arduino library functions and sample programs to facilitate rapid secondary development
- Support one-click download program
- Lithium battery interface circuit
- Military-grade process standards, long-term stable work



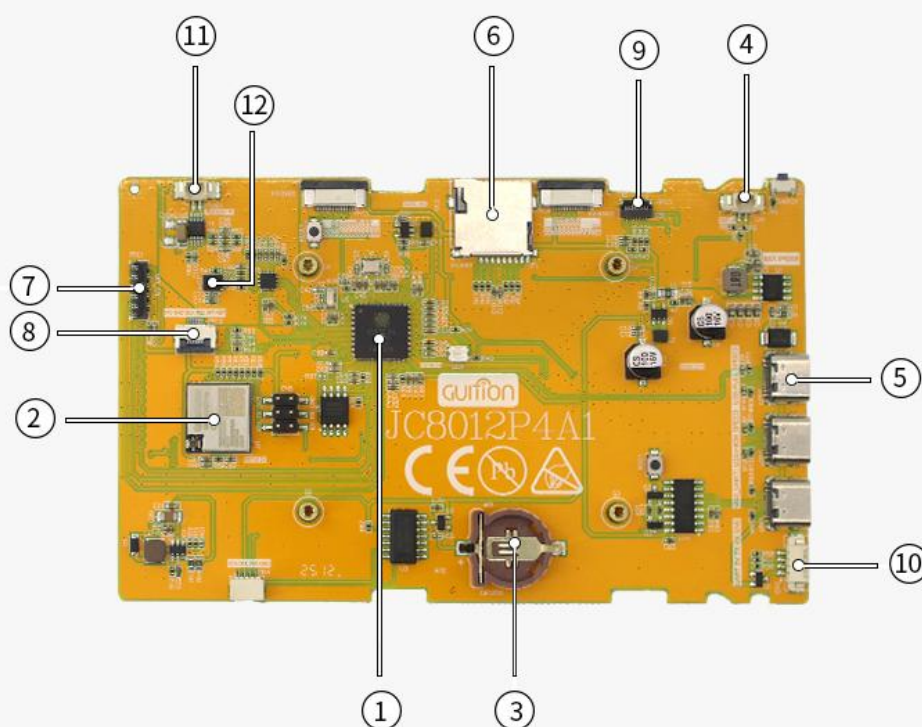
## Product parameters

Name	Describe	Remark
Display color	16.7M color	
SKU	Capacitance touch: JC8012P4A1C_I_W_Y	
SKU	Capacitance touch:JC8012P4A1C_I_W_Y1	With battery
Size	10.1 inch	
Type	TFT	
Driver chip	JD9365	
Resolution	800 * 1280(Pixel)	
Effective display area	216.58 * 135.36(mm)	
Module size	242.80 * 158.70(mm)	
View	IPS	
Operating temperature	-20℃~70℃	
storage temperature	-30℃~80℃	
Operating Voltage	5V	
Power consumption	About 700mA	
Product weight	About 550g	



## Interface Description

### Internal Interface Display



- |                     |                      |                      |
|---------------------|----------------------|----------------------|
| 1、ESP32-P4 chip     | 2、ESP32-C6           | 3、RTC battery holder |
| 4、Battery connector | 5、TYPE-C             | 6、TF card holder     |
| 7、LCD-FPC           | 8、CTP-FPC            | 9、video camera       |
| 10、UART             | 11、Speaker Interface | 12、Microphones       |



## Product Size



